

ONLINE TRANSLATION MANAGEMENT FRAMEWORK

Web-based translation and client review in real-time.

Fast, cost-saving, transparent and easy.

The Translation Management Framework from Andrä AG is being used by more than 1,000 users, performing with **ontram** every year more than 10,000 translations with a total volume of more than 10 million lines in up to 40 languages.

The right ontram edition for every application

In view of the large range of functions and specifications and the associated individual fields of application, Andrä AG offers three different **ontram** editions.

ontram Enterprise Edition

The Enterprise Edition can be fully adapted to the required needs as a result of the specific selection of functions and also offers unlimited expansion possibilities. The edition is fully multitenant and can e.g. be used under different addresses by entirely separate user groups.

The **ontram** Enterprise Edition is ideal when many translation processes have to be carried out simultaneously by a large number of users.

ontram ASP Edition

The ASP Edition offers the complete range of functions of the Enterprise Edition, but with a usage-related cost structure.

A customised quote will be made out based on volume and required functionality. In addition users benefit from a wide range of services of the Andrä AG processing team.

ontram Value Edition

The Value Edition is compact, highly efficient and can be implemented in a very short time. It supports the handling of several process groups with a maximum of 50 users and is equipped with a powerful XML filter.

The **ontram** Value Edition can be hosted by the customer or by Andrä AG in a simple and cost-efficient way.

The **ontram** Value Edition offers all product advantages and an excellent price/performance ratio. It is possible to upgrade to the **ontram** Enterprise Edition at any time.

About Andrä AG

Andrä AG offers its customers a long-term and loyal partnership and carries out its activities at four different locations.

The origins of the company can be traced back to Straubenhardt, where both the registered office and the seat of business of the company are situated. The expansion of the company started with the foundation of the branch office in Karlsruhe. The company continued its geographic expansion by opening a branch office in Berlin. Meanwhile, the branch office in the capital city has developed into the most important location and houses the development department, the order processing department and the company-owned data centre. The latest addition came with the opening of the Darmstadt office.

The range of products and services of Andrä AG can be divided into three business areas.

The »Development and Systems« department is the nucleus for product development and innovation. Our employees ensure the dependability and continuous improvement of the existing products as well as the development of new products.

Five Benefits

easy	Simplifying of time-consuming translation and review operations
inexpensive	High savings by re-using already translated content (Translation Memory)
flexible	Optimal synergies between different media and formats
reliable	Direct and reliable preview in real-time (style and content)
transparent	Maximum control and absolute transparency of the entire translation process

The »Order processing and Coordination« department supports our customers in their daily activities. Our service package varies from case to case and ranges from the full process control to process documentation and optimisation.

The »Sales and Organisation« department acquires new customers, serves already existing customers and ensures a seamless co-operation in all cross-sector projects.

ontram



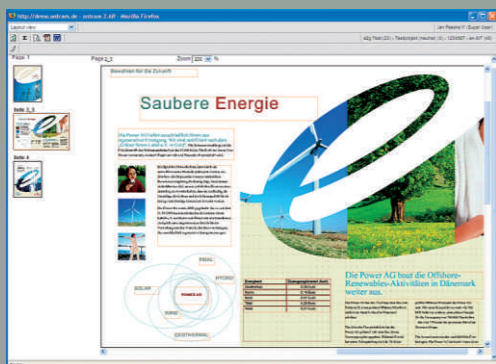
Contact Details

Andrä AG

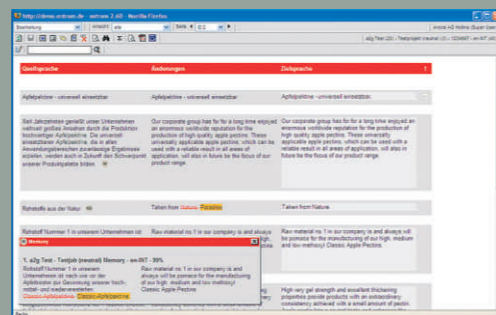
Please contact our sales hotline for further information:

+ 49 30 | 3360440-07

Email: sales@andrae-ag.de
Web: www.andrae-ag.de



Preview Function: Translated content can be viewed in the final layout.



Translation Mode: The users can see the source and target language in one window. The Translation Memory provides translation suggestions.

ONLINE TRANSLATION MANAGEMENT FRAMEWORK

Web-based translation and client review in real-time.

Fast, cost-saving, transparent and easy.

ONLINE TRANSLATION MANAGEMENT FRAMEWORK

Web-based translation and client review in real-time.

Fast, cost-saving, transparent and easy.

The Translation Management Framework **ontram** of Andrä AG is an intelligent and fully web-based solution for translation management, which has proven successful in numerous different applications in the last couple of years.

What is ontram?

Whether you want to translate a brochure, a website, an office document or XML data, **ontram** rises to the challenge. Suitable interfaces are available for almost all current data formats.

An Efficient Tool

ontram enables browser-based translation and editing of text independent of the data format of the source document.

The translation memory, preview function, integrated change management and other productivity functions support the user, document the editing status and ensure a seamless co-operation of project participants.

Fields of Application

ontram can be used everywhere where content has to be localised regularly. Also when existing processes and systems already support multilingualism, it is often useful to carry out the translation and review processes in a professional translation management system.

Media-neutral Processing

Core application and user interface are standardised for all data formats.

The document to be translated is analysed by a specific import filter and the content is separated from the layout. Subsequently, media-neutral content processing is carried out according to the processing steps defined by the workflow.

After the document has been translated the export filter posts the generated language versions into the original format.

Workflow in Process Chain

The start and end of the **ontram** workflow can be defined individually as well as all the project-specific workflow steps and associated responsibilities. **ontram** fully adapts itself to your process needs.

Translation tasks are clearly assigned to your editors, which avoids any unclear status information. The system automatically compares the current and reference status.

In the event of deviations, **ontram** initiates previously defined escalation steps.

ontram as Web Service

ontram can be integrated in existing infrastructures as an intelligent web service, e.g. based on SOAP or CORBA.

When the system recognises that content has to be processed, it will automatically be transferred to **ontram** and translated as well as reviewed with the aid of **ontram** and then transferred back fully automatically.

Translation Memory Advantages

If the same or a similar text has already been translated, **ontram** automatically recognises this and provides the translator with the available translations.

If the translation is a 100% match, the text can be copied - after a verification. Deviations are displayed and the necessary changes can be made.

Besides the reduction of the project costs, the translation memory also leads to a standardisation of the translation style and considerably reduces subsequent review costs.

Quality Assurance

In order to comply with quality guidelines in form and content, **ontram** supports its users with a multitude of useful functions.

For instance the length of a text is continuously monitored or at the latest verified before hand over in order to make sure that all the text has been translated.

Preview Function

Where text-layout relations are important, **ontram** offers users the possibility to view the actual processing status in the final layout.

Depending on the output format, a PDF document or a file in the source format are generated or a preview in the target system is initiated. **ontram** offers a binding layout preview function.

System Connection

Content Management Systems (CMS), eLearning systems, Editing Systems, Databases, PIMs and ERPs manage large text volumes. The **ontram** interfaces enable a seamless integration for an efficient cross-system translation process.

The interfaces support the exchange of content data as well as workflow information. The savings potential compared to traditional translation processes is enormous!

Spell Check

ontram is equipped with an integrated spell checker that can be connected to a glossary and is available in more than 30 languages.

Glossary

The user will be provided with specified translations for individual words and sentences by the glossary. This enables a corporate-wide proper usage for individual words, technical terms, brand names and established expressions.

Unicode

ontram is completely based upon the Unicode character set (UTF-8) and can process any language, including right-to-left layouts without any problem.

Deadline Management

ontram comes with an integrated module for deadline management associated with the workflow engine that informs the user of the project progress and simultaneously and automatically carries out a comparison of the current and reference status.

The email-based escalation system and easy to use analysis functions allow timely action if there are any deviations from the project plan. Additional interfaces also allow an exchange with external systems.

Content Filter Function

ontram offers users a process-optimised filter to display customised content.

The filter »only changed text« e.g. shows the content in which a change took place during the last workflow step.

Change Management

The change management function documents and shows in detail which content changes were carried out by whom and when. In addition to the long-term documentation, this function offers a clear and distinct transparency of the review processes.

Status Overview

The status overview enables authorised users to view the status in real-time. Any deadline deviations are shown in order to be able to contact the relevant users immediately. All important functions for the process management are combined in this status overview.

ontram is Fast and Simple

As a result of the close co-ordination between software developers and users, **ontram** is equipped with an intuitively understandable and task-oriented user interface.

Expensive product training is made redundant. In general, user training sessions are offered via telephone. The provided user manual describes the key functions and offers assistance with daily activities.

If deployed as an ASP (Application Service Providing) solution **ontram** can be implemented in a few days - if necessary step-by-step.

Further Functions

- Role module for different user rights
- Process for author's correction projects
- Update processes
- Fully automatic billing
- Analysis of savings

Supported Formats

ontram currently includes the following data compatibility (visit our website for updates):

- Adobe FrameMaker
- Adobe InDesign
- CMS-XML formats
- CSV
- Flash
- HTML
- Microsoft Access
- Microsoft Excel
- Microsoft PowerPoint
- Microsoft Word
- Office Open XML
- OpenDocument
- QuarkXPress
- SCORM (WBT)
- Typo3
- XLIFF
- XML

Please contact us if the format you need is not shown on this list. We gladly provide you with the most updated list of formats or will make the format available upon your request.

All mentioned trademarks, trade names or registered trademarks of third parties are protected by copyright and are the property of their respective owners.

